



STATEMENT OF QUALIFICATIONS



ABOUT SEQUOIA

Founded in 2011, **Sequoia Ecological Consulting, Inc. (Sequoia)** is a San Francisco Bay Area-based, disadvantaged small business that provides environmental consulting services to public agencies, utilities, construction firms, infrastructure developers, environmental and engineering firms, and private clients throughout California. Sequoia employs a staff of 35, including 4 registered professionals, who are based in our Contra Costa, San Diego, and Sacramento County offices.

As a biological specialty firm, Sequoia regularly consults with state and federal agencies for Endangered Species Act compliance and conducts field studies for permit applications and site assessments. We help our clients minimize project impacts on biological resources, and support them through permit applications, monitoring, and annual reporting to satisfy the requirements of varied complex permits. We apply our experiential knowledge early in the project design process to anticipate issues and avoid costly escalations in permitting, documentation, and monitoring requirements.

Sequoia's team includes wildlife biologists, botanists, construction monitors, restoration specialists, herpetologists, storm water inspectors, permitting specialists, and aquatic biologists – all of whom are experienced in the evaluation of biological resources at all levels. Our staff are well-versed in the intricacies of Federal, State, and local codes and regulations including the Clean Water Act, the Fish and Game Code, Federal and State Endangered Species Acts, the National Environmental Protection Act, the California Environmental Quality Act, multiple Species Conservation Programs, Habitat Conservation Plans, and Natural Community Conservation Plans.

Services

- Biological Services
- Environmental Planning and Regulatory Compliance
- Mitigation and Conservation
- Habitat Restoration
- Geographic Information Systems (GIS)
- Storm Water Services

Markets Served

- Public Works/Municipal
- Construction
- Transportation and Infrastructure
- Water
- Utilities
- Conservation, Parks, and Open Space
- Wildfire Hazard Mitigation
- Mining and Natural Resources
- Mitigation Planning and Conservation Banking



CERTIFICATIONS

Sequoia is a certified Disadvantaged Business Enterprise (**DBE**), Small/Micro Business Enterprise (**SBE/MBE**), Woman-owned Business (**WBE**), and Woman-owned Small Business (**WOSB**).

| | | |
|----------------------|---------------|--------------------------|
| WBE | CPUC WBENC | #11110228 #2005127466 |
| DBE | CUCP/CA DoT | #40492 |
| Small/Micro Business | CA DGS | #1790596 |
| WOSB & EDWOSB | Federal | |
| Gold Shovel Standard | PG&E | |



Sequoia holds **GSA Contract No. 47QRAA18D0024** for Special Item Number (SIN) 899 1 – Environmental Consulting Services.

| | |
|------------------|---------------|
| GSA Contract No. | 47QRAA18D0024 |
| GSA Schedule | 00CORP |
| SIN No. | 8991 |
| Primary NAICS | 541620 |

Please contact us at gsa@sequoiaeco.com to learn more about Sequoia's GSA contract services or to request a quote.

SEQUOIA SERVICES



Biological Services

Sequoia provides integrated biological, permitting, and project management assistance, effectively supporting projects from the planning phase through the mitigation monitoring phase. Our biological services include:

Construction Compliance and Biological Monitoring

- Environmental training
- Pre-construction surveys
- Daily monitoring and reporting
- Long-term mitigation monitoring

Botany

- Listed and sensitive plant surveys
- Vegetation mapping
- Focused surveys and California Native Plant Society protocol botanical surveys

Fisheries

- Electrofishing surveys
- Fish relocations and rescues
- Seining/netting
- Snorkel surveys
- Salmonid habitat assessments
- Redd counts



Biological Services - continued

Biological Resource Surveys

- Wetland delineations and mapping
- Biological resource assessments
- Constraints analysis
- Infrared camera trapping surveys
- Nesting bird surveys
- Habitat surveys
- Species inventory
- Large mammal (deer) migration and movement surveys

Special-status Species Surveys and Reporting

- USFWS 10(a)(1)(a) recovery permits and CDFW MOUs for:
 - California red-legged frog
 - California tiger salamander
 - San Francisco garter snake
 - Vernal pool branchiopods
 - Foothill yellow-legged frog
 - Western burrowing owl

- Protocol bird surveys
 - Burrowing owl
 - Swainson's hawk
 - California spotted owl
 - Northern goshawk
 - Bald eagle
 - Willow flycatcher
- Protocol herpetofaunal surveys
 - California red-legged frog
 - California tiger salamander
 - Foothill yellow-legged frog
 - Sierra Nevada yellow-legged frog
 - Yosemite toad
- Bat surveys
- San Joaquin kit fox surveys
- Vernal pool branchiopod surveys



Environmental Planning and Regulatory Compliance

Sequoia's biologists and planners streamline complex regulations and permitting requirements. We offer a wide range of environmental planning and regulatory solutions including:

- Biological support for CEQA/NEPA compliance
- Mining and reclamation support
- Constraints analysis
- General and specific plan support
- Habitat Conservation Plan (HCP) compliance
- US Fish and Wildlife Service Section 7 consultation support
- Regional Water Quality Control Board Section 401 Water Quality Certification permitting
- California Department of Fish and Wildlife Section 1602 Lake and Streambed Alteration Agreements
- US Army Corps of Engineers Clean Water Act Section 404 permits



Mitigation and Conservation Planning

Sequoia's conservation/mitigation bank development and permit-required resource mitigation implementation services include:

Mitigation Site Assessments

- Identification of conservation/mitigation resources on private lands
- Focused surveys for listed species

Resource Agency Permitting

- USFWS Section 7 and Section 10 permitting
- CDFW 2080.1 and 2081 permitting
- Interagency review team conservation/mitigation bank applications

Long-term Management Plan Development and Monitoring

- Long-term management plan preparation
- Coordination of mitigation requirements with resource agencies
- Implementation of long-term monitoring for species and habitats



Habitat Restoration

Sequoia's habitat restoration and planning services are rooted in our understanding of the natural world and recognition of the influence of regional geology, geomorphology, hydrology, and climate on a project's habitat. Ultimately, the natural flora and fauna in a project area are attracted to suitable habitat and onsite resources; through our design and planning, we can create a platform for species restoration, from the soil to the tree canopy. Our services include:

Restoration Planning and Design

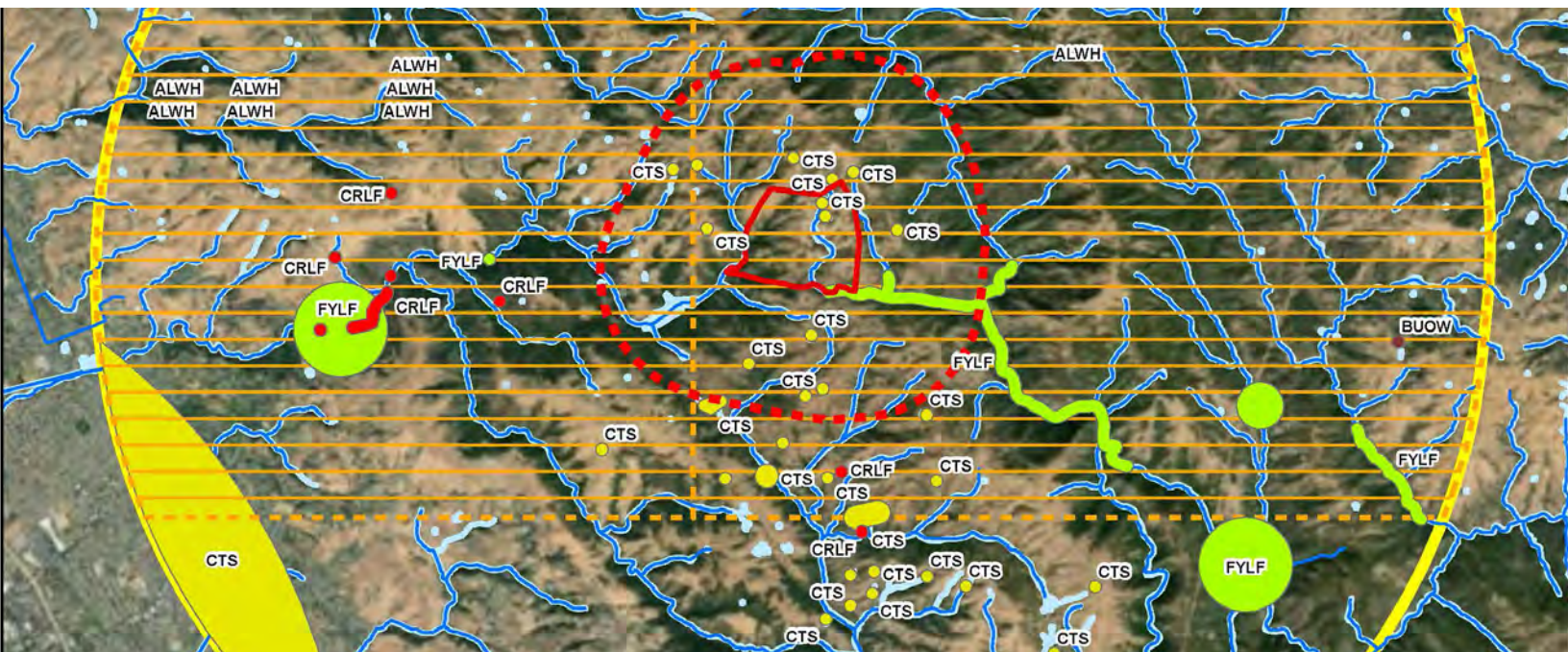
- Revegetation and restoration plans
- Seed sourcing and procurement
- Species-specific planting lists

Restoration Monitoring and Reporting

- Baseline reporting, photo documentation, and long-term reporting
- Compliance monitoring
- Reporting requirements for submittal to agency personnel

Habitat Creation, Design, and Build (Partnership)

- Feasibility assessments
- Conceptual planning and design
- Installation of restoration and mitigation plans
- Landscape monitoring



Geographic Information Systems (GIS)

Our GIS team provides a range of services, from small-scale mapping to program-wide analysis and reporting. Specific services include:

- Data capture and GIS analysis
- Mapping and cartographic services
- Wildlife movement and corridor assessment mapping
- Remote sensing
- Special-status species distribution and habitat suitability analysis
- Drone services
 - Baseline imagery
 - Supplemental data collection
 - Vegetation habitat mapping
 - Project/field compliance before and after photography



Storm Water Services

Sequoia's Qualified Storm Water Pollution Prevention Plan (SWPPP) Developers-Practitioners (QSDs-QSPs) support clients in complying with Clean Water Act (CWA), National Pollutant Discharge Elimination System (NPDES), and State Water Resources Control Board (SWRCB) rules and regulations. Sequoia is highly experienced with regional projects as well as the various agency permits governing work throughout California. We can provide local inspection staff statewide who can be onsite on short notice for storm events, agency meetings, and other time-sensitive storm water needs. Our services include:

- Site inspections and monitoring
- SWPPP training program design and on-site crew training
- On-site storm water collection
- Compliance management



Additional Services

Sequoia offers customized project solutions and minimizes overhead costs by working closely with qualified associates that provide specialized expertise on an as-needed basis. These carefully selected companies and scientists support Sequoia staff in the field and on the desktop, providing expert guidance related to unique species or project requirements, as well as research assistance and peer review. Services that Sequoia can provide in this manner include cultural resources inventories, onsite cultural resources monitoring and support, and archeological assessments.

MANAGEMENT TEAM



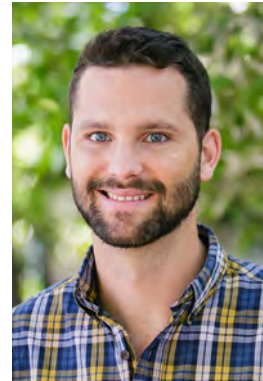
Debie Montana, MS
President & Principal
Biologist



Bill Montana
Chief Financial Officer
& Principal



Brett Hanshaw, MS
Principal & Senior
Technical Specialist



Tashi MacMillen
Principal & Biological
Services Manager



Jesse Reeb
Senior Biologist &
Project Manager



Amber Anderson, MS
Biologist & Project
Manager



Margaret Finch
Biologist &
Project Manager



Suzanne Brock
Financial Director &
Controller



Molly Ehlers
Business Operations
Manager



Melissa Krause
Marketing Manager



SEQUOIA CULTURE

Sequoia constantly seeks to achieve the ultimate balance between outstanding client service, employee well-being, and financial success. We accomplish this by living our shared core values of **Respect, Excellence, Passion, Integrity,** and **Teamwork**, and celebrating the unique contributions and accomplishments of our team.

Sequoia provides excellent compensation and comprehensive benefits packages including mentoring and career advancement programs, outstanding paid training opportunities, vacation time, and excellent health and dental insurance.

Sequoia also sponsors regular staff events throughout the year. Our company events have included:

- Bocce ball and dinner at Plank Oakland
- Pizza night and doggy play date
- Team-building games
- A's, Giants, and 49ers games
- Holiday parties with white elephant gift exchange
- Wine train through Napa
- Food and clothing drives
- Happy hours

THE SEQUOIA DIFFERENCE

Statewide Multi-regional Expertise. Sequoia staff have worked extensively throughout the state, and our team has considerable experience with local species, habitats, agencies, and regulations.

Experience Implementing Project Regulations from Multiple Agencies. Sequoia frequently conducts biological surveys and monitoring in compliance with the guidelines of multiple agencies, and our surveys and work products are tailored to address the requirements of each.

Extensive Habitat Conservation Plan (HCP) Experience. Sequoia has worked under numerous HCPs including PG&E's San Joaquin Valley and Bay Area HCPs, the draft Solano Multispecies HCP, and the East Contra Costa County HCP.

Competitive Rates. As a result of our low overhead costs, local workforce, cloud-based real-time scheduling, and experienced, cross-trained staff, Sequoia's rates are highly competitive.

Financial Stability. Sequoia is profitable and financially stable, with excellent customer retention levels. Our project managers and accountants utilize widely accepted Oracle financial and project accounting software, enabling them to track project resources in real-time.

Ethics. Sequoia is committed to ethical business practices and has never been involved in any litigation.

Track Record of Success. Sequoia has a history of providing our services on schedule and within budget. Our dedication to client service and project success has resulted in 85% return business from our clients.

Commitment to Client Relationships and Satisfaction. Sequoia is a small firm that delivers agile, customer-focused support. We develop lasting client relationships by providing tailored service that enables us to consistently exceed project goals.



TRANSPORTATION & INFRASTRUCTURE PROJECTS



Alhambra Valley Road Safety Improvement Project

- CONTRA COSTA COUNTY

This Caltrans Local Assistance project involved slope stabilization, drainage improvement, and road widening in habitat adjacent to a creek and occupied by Alameda whipsnake, California red-legged frog, and numerous California species of special concern. Sequoia worked with construction management, County representatives, and contractors to ensure compliance with a USFWS Biological Opinion and CDFW Section 1602 Lake and Streambed Alteration Agreement.

As the on-site USFWS-approved biologist for California red-legged frog and Alameda whipsnake, Sequoia assured all work activities were in environmental compliance, conducting daily pre-activity clearance surveys for nesting birds and for federally and state-threatened Alameda whipsnake and federally threatened California red-legged frog, and conducting environmental awareness trainings with on-site personnel.



Solano County On-Call for Roadway Improvement Projects

- SOLANO COUNTY

Solano County needs to adhere to construction-related requirements to secure NEPA clearance for several federally funded projects, in accordance with Caltrans Local Assistance Procedures and in compliance with the State of California environmental handbooks. Under an on-call contract with the County, Sequoia has provided biological support on a number of active transportation and roadway improvements. This work has included pre-construction surveys for species listed in project biological documents, protocol-level reconnaissance surveys for species of concern and/or endangered species, environmental training for construction staff, and construction monitoring and reporting for species listed in project biological documents and permits.



Palomares and Redwood Roads Law Enforcement Areas

- ALAMEDA COUNTY

This Caltrans Local Assistance project identified locations adjacent to the existing roadway to allow law enforcement vehicles to safely park and observe traffic, and to provide pullover areas for vehicles being cited along Redwood Road and Palomares Road. Sequoia performed an impact analysis to determine potential adverse effects of the project on special status species and/or regulated habitats. We conducted desktop review, site analysis, and a reconnaissance survey culminating in a biological technical report. The Biological Assessment (BA) included a biological resources constraints analysis matrix. Sequoia provided guidance and recommendations to through the analysis and initial regulatory approvals process, and prepared a Natural Environment Study (Minimal Impact). Permits included USACE Clean Water Act section 404, SF Bay RWQCB Section 401 Water Quality Certification, and CDFW 1600 Streambed Alteration Agreement.



Orwood Road Bridge Replacement

- CONTRA COSTA COUNTY

Contra Costa County Public Works Department's Orwood Road Bridge Replacement project, which was funded by (Federal) Highway Bridge Replacement Funds, Local Road Funds, and East Bay Regional Park District funds, involved the removal of the 70-year-old timber Orwood Road Bridge and the construction of a 42-foot wide replacement bridge in two stages to accommodate existing traffic. Sequoia conducted protocol Swainson's hawk surveys and routine nest start surveys, biological monitoring, and reporting in support of this project.



Statement of Qualifications



UC Merced 2020 Project

- MERCED COUNTY

The newest University of California campus, UC Merced, is undergoing an expansion to double its student capacity. Sequoia is working with the design-build contractor to provide biological support services for the project EIS/EIR, USFWS Biological Opinion and its amendments, CDFW ITP and its amendments, and USACE 404 and SWRCB 401 permits. Sequoia developed the environmental training plan and collaborated on the development of an environmental management plan. In addition, our staff performed biological monitoring and surveys for Central Valley sensitive species, conducted reconnaissance-level and daily pre-construction surveys, and coordinated with construction crews and management throughout the project to ensure that all requirements and avoidance and minimization measures were met for each phase and work area. Sequoia also assisted in obtaining additional Section 1600 Streambed Alteration Agreements for the project.



Camino Tassajara Bicycle Lane Gap Project

- CONTRA COSTA COUNTY

This Contra Costa County Public Works Project will provide a contiguous Class II bike lane and widen the existing roadway. The Project will also contribute to the completion of the bikeway network proposed in the 2009 Contra Costa Countywide Bicycle and Pedestrian Plan. Sequoia's scope of work included construction monitoring support for compliance with project permits, and monitoring of exclusion fence installation and ground disturbance for installation of the bicycle lane. Focal species included California tiger salamander, California red-legged frog, and nesting birds and raptors.

WATER PROJECTS



Kaiser Pond and Shinn Pond Fish Passage Retrofit

• ALAMEDA COUNTY

Sequoia provided biological compliance support for two Alameda County Water District projects in the Alameda Creek drainage. Our team of biologists conducted pre-construction surveys for initial ground disturbance, monitored construction activities to ensure compliance, and performed multiple fish relocations for the project. The **Kaiser Pond** project constructed a new diversion pipeline and cylindrical fish screen. The screen system and diversion intake are used to divert water from the Alameda Creek Flood Control Channel to Kaiser Pond. This project included extensive excavation, horizontal directional drilling, fish relocations, focused species surveys, and implementation of project-specific storm water Best Management Practices. The **Shinn Pond** project installed a new 54-inch gravity redirection pipeline underneath active UPRR and BART tracks. Sequoia ensured compliance with the terms of the CDFW Lake and Streambed Alteration Agreements and the USACE 404 Permit, with a scope of work that covered biological resources, water quality, and erosion control.



Contra Costa Water District Canal Replacement

• CONTRA COSTA COUNTY

The Contra Costa Water District is in Phases 3 and 4 of a project to replace just over 1 mile of unlined drinking water conveyance canal with buried pipeline. Sequoia is providing biological support for project implementation including pre-construction surveys and habitat assessments for California red-legged frog, giant garter snake, burrowing owl, and San Joaquin kit fox. We are also performing biological monitoring to ensure compliance with the Final Mitigated Negative Declaration (MND), USFWS Biological Opinion, and USACE 404, RWQCB 401, and CDFW 1600 and Incidental Take permits. Sequoia personnel coordinate directly with the District as well as contractors to identify potential constraints and work toward field-optimized solutions. Additionally, Sequoia prepares biological compliance documentation for transmittal to the appropriate regulatory agencies.



Stanislaus Afterbay Dam Removal and Revegetation

- TUOLUMNE AND CALAVERAS COUNTIES

The Stanislaus Afterbay Dam was a timber and steel dam built in 1907 along the Middle Fork of the Stanislaus River. After outliving its effectiveness following completion of the New Melones Reservoir in 1982, the dam was removed in 2012. Sequoia assisted in ensuring environmental compliance and restoration goals were met per requirements of federal and state permits. We performed pre-construction surveys for foothill yellow-legged frog, western pond turtle, and nesting birds, and vegetation mapping for planned tree removal. During dam removal activities, Sequoia biologists helped lead the safe relocation of over 2,000 fish to avoid impacts from project activities. Following dam removal, Sequoia botanists and revegetation planners used the onsite survey information to draft the revegetation plan approved by the CDFW, and oversaw replanting at the project site.



City of Suisun City Pierce Island Levee Rehabilitation

- SUISUN CITY

Sequoia is working closely with the City of Suisun City to ensure biological compliance throughout its multi-phase Pierce Island levee rehabilitation project. We conducted pre-construction surveys for special-status species and rare plants, and protocol-level surveys for Ridgway's rail and Black rail. Sequoia biologists monitored construction activities and administered environmental training throughout all three key phases of the rehabilitation project, which included vegetation removal, exclusion fence installation and levee grading. We provided electronic biological compliance reporting to allow information to be streamlined from the field to the client.



Upper Llagas Creek Flood Protection Project

- SANTA CLARA COUNTY

In support of this Valley Water flood protection project, Sequoia performs pre-construction clearance surveys for listed species, biological monitoring and facilitates the Worker Environmental Awareness training program during vegetation clearing and ground disturbance, debris removal, pilot channel excavation, winterization plan implementation, and other project activities. Sequoia authored the Nesting Bird Management Plan, San Francisco dusky-footed woodrat Nest Relocation Plan, the Winterization Plan, and the Western Pond Turtle Encounter Plan. Sequoia biologists led fish rescue efforts associated with mitigation work at Lake Silveira.

Guadalupe River Flood Protection Project (Reach 12)

- SANTA CLARA COUNTY

This project aimed to protect more than 7,500 parcels from a 100-year flood event and provide long term beneficial impacts to stream ecology, hydrology, fisheries, and habitat. Sequoia biologists provided environmental awareness training to crew members and monitored construction activities for environmental compliance, preparing daily monitoring reports for client and agency review. We conducted pre-construction surveys and daily nest surveys during the avian nesting season, and conducted a study to determine whether disturbance to active nests would occur during access by large construction equipment under the various bridges.



CONSERVATION, PARKS, & OPEN SPACE PROJECTS



EBRPD Fuels Management Support

- ALAMEDA AND CONTRA COSTA COUNTIES

Sequoia is assisting the East Bay Regional Park District (EBRPD) with implementation of their Wildfire Hazard Reduction and Resource Management Plan. We have been tasked with coordinating communication and monthly update meetings with the District, managing and supervising field activities, performing surveys for special-status species such as pallid manzanita, assessing habitat quality for Alameda whipsnake, identifying signs of infection by *Phytophthora cinnamomi*, and providing biological monitoring services for implementation of Avoidance and Minimization Measures during fuels treatment activities. Sequoia is also assisting with development and implementation of vegetation monitoring pre- and post-treatment.



Old Haul Road Plant Survey

- SAN MATEO COUNTY

In partnership with San Mateo County Parks Department (SMCP), San Mateo County Resource Conservation District (RCD) prepared to conduct bank stabilization at three failing creek crossings along Old Haul Road within Pescadero Creek County Park. The project plans called for the removal of soils, crib logs, woody debris, and metal culvert pipe at the crossing sites and replacement of failing materials with new engineered culvert crossings. The project areas were located in suitable habitat for multiple special-status plant species as identified in the project's Biological Resources Assessment (BRA). Sequoia's botanist conducted a rare plant survey over multiple visits, appropriately timed for the focal species' blooming periods. Following the surveys, Sequoia produced a data set and a report containing a list of all vascular plants observed onsite and a summary of all surveys conducted.



Mt. Diablo State Park, Juniper Trail Rare Plant Surveys

• CONTRA COSTA COUNTY

Sequoia conducted rare plant surveys to assess and map the presence of special-status species in support of the proposed Juniper Trail reroute project. Surveys included a desktop review of existing literature and previous datasets from the survey area, multiple protocol floristic-level surveys timed during the periods of identifiable phenology for potentially occurring special-status species, and a final report documenting survey results and recommendations. Sequoia's input on this project provided critical planning information for trail routing and reduced potential impacts to special status plant species and mitigation requirements for the project.



Ledson Marsh Spillway Improvement Project at Trione-Annadel State Park

• SONOMA COUNTY

California State Parks replaced a concrete spillway and installed an inline water level control structure along the edge of Ledson Marsh within known California red-legged frog aquatic breeding habitat. Sequoia performed biological monitoring and pre-construction surveys for listed species, enforced biological and environmental permit compliance, and provided daily monitoring reports. Sequoia biologists rescued over 30 California red-legged frogs, and completed the project without any take.



FUEL BREAK AND VEGETATION MANAGEMENT PROJECTS



North Orinda Shaded Fuel Break Project

• CONTRA COSTA COUNTY

The North Orinda Shaded Fuel Break Project is constructing a 14-mile long, 1,515-acre fuel break along the northern border of Moraga, Orinda, and Lafayette. Divided into a total of 55 smaller “treatment units”, this project is employing a variety of specific fuel management techniques including understory clearing, tree pruning, brush clearing, chipping, mowing, and select tree removal. Sequoia works closely with fire crews to develop fire prescriptions, as well as permit interpretation and recommendations for communication with USFWS and CDFW. Working in a variety of conditions, Sequoia biologists perform biological monitoring during construction, provide environmental training to fire crews and vegetation removal contractors, and perform habitat assessment surveys and sensitive species surveys.



Kings Mountain Road Fuel Reduction Project at Huddart County Park • SAN MATEO COUNTY

In support of San Mateo County Parks Department’s Kings Mountain Road Fuel Reduction project at Huddart County Park, Sequoia provided a biological monitor to complete rare plant surveys in advance of fuel reduction activities. The project will maintain and improve the existing overstory canopy while reducing or eliminating ladder, dead, and exotic understory fuel. The project crosses several vegetation types including a Redwood/Douglas fir forest, Oak Woodland, and Manzanita Coastal Chapparral. Sequoia’s botanist performed surveys for Kings Mountain manzanita, the primary species of interest, as well as other rare, threatened, and endangered plants with the potential to occur in the project area.



East Bay Regional Park District Fuels Reduction Program Biological Support

- ALAMEDA AND CONTRA COSTA COUNTIES

Sequoia is assisting the East Bay Regional Park District (EBRPD) with implementation of their Wildfire Hazard Reduction and Resource Management Plan. We have been tasked with coordinating communication and monthly update meetings with the District, managing and supervising field activities, performing surveys for special-status species such as pallid manzanita, assessing habitat quality for Alameda whipsnake, identifying signs of infection by phytophthora cinnamomi, and providing biological monitoring services for implementation of Avoidance and Minimization Measures during fuels treatment activities. Sequoia is also assisting with development and implementation of vegetation monitoring pre- and post-treatment.



PG&E's Wildfire Safety Inspection Program

- PG&E SERVICE TERRITORY, CALIFORNIA

Following the 2017 and 2018 wildfires, PG&E's Wildfire Safety Inspection Program (WSIP) has been implemented in addition to routine inspection and maintenance programs, to further reduce wildfire risk. As part of this program, more than 2,000 PG&E employees and contractors have been conducting enhanced safety inspections of electric towers, poles, substations and transmission and distribution lines in high fire-threat areas. Sequoia is supporting PG&E's enhanced wildfire safety efforts and accelerated safety inspections of electric infrastructure in areas of higher wildfire risk. Our biologists have conducted permit compliance support, pre-construction surveys, nesting bird surveys, and project reviews at various sites throughout PG&E's service territory.



HOUSING AND DEVELOPMENT PROJECTS



City of Livermore Pacific Avenue Affordable Housing Project

- ALAMEDA COUNTY

The City of Livermore conducted CEQA environmental review for the proposed development of a City-initiated 175-unit affordable housing project on a 3.6-acre parcel. Sequoia prepared a Biological Site Assessment to support the Initial Study and Mitigated Negative Declaration pursuant to CEQA. We evaluated potential impacts on special-status species and their habitat, and whether the project would require mitigation measures. Sequoia performed a desktop review, conducted a reconnaissance-level site survey, and authored a technical memorandum that described special-status species and habitats with potential to occur in the proposed project area.



Republic Square Mixed-Use Retail Development

- ALAMEDA COUNTY

A mixed-use retail development is planned just east of the San Francisco Premium Outlets in Livermore. The site will feature 65,000 square feet of restaurants, shops, and hotels. The project area is located just west of Arroyo Las Positas, near California red-legged frog critical habitat and known occurrences of burrowing owl. Sequoia provided supported the developer in maintaining compliance with the project's Biological Opinion and other permits under the El Charro Specific Plan. Sequoia's USFWS-approved biologists conducted pre-construction surveys for California red-legged frog, burrowing owl, and nesting birds; monitored wildlife exclusion fence installation and repair; monitored ground disturbance work; and performed weekly spot checks and fence inspections to ensure that the site remained in compliance and clear of special status species. Sequoia also administered environmental training to all crew members working onsite.



City of Hollister Rosati Annexation Pre-Zoning

- SAN BENITO COUNTY

The City of Hollister sought to pre-zone a parcel consisting of medium-density residential for future annexation into the corporate limits of the City. Working with the CEQA consultant, Sequoia supported preparation of an Initial Study. We performed a reconnaissance-level site assessment of the 23.5-acre parcel to document existing conditions and prepared the biological resources section of the Initial Study, including the CEQA Checklist. Sequoia developed developed site-specific mitigation measures to address potential project-related impacts resulting from future development of this parcel.



Ball Estates Subdivision

- CONTRA COSTA COUNTY

The Ball Estates project (project) is a proposed subdivision of an existing 61-acre project site with for residential use. The project would provide access to local trails, with a large portion of the site remaining as open space. Sequoia provided a peer review of the applicant-provided biological resource reports prepared for CEQA review. We managed a team of resource experts performing a site assessment for Alameda whipsnake; habitat assessments for California tiger salamander, California red-legged frog, and western pond turtle; a wetland delineation under Section 404 of the Clean Water Act; rare plants reports; and an arborist report. Sequoia also reviewed existing documentation, performed an updated desktop review, and conducted a site visit at the proposed project site to determine the validity of the applicant-supplied documents for use in developing a CEQA document.



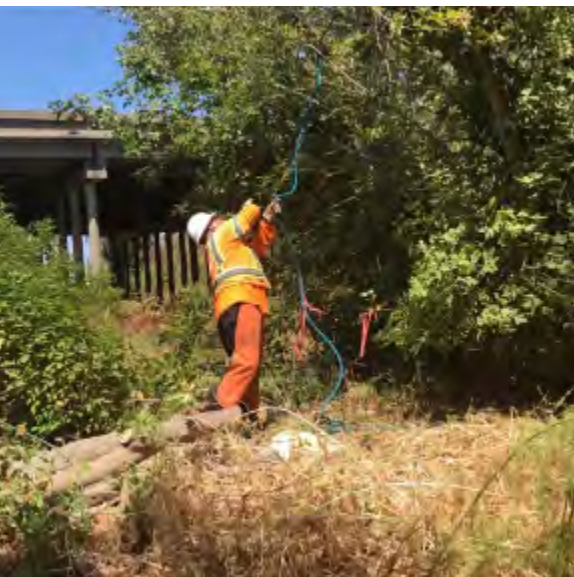
UTILITIES PROJECTS



Burbank Sanitary District Environmental Technical Studies in Support of State SRF Loan Program

- UNINCORPORATED SANTA CLARA COUNTY

Burbank Sanitary District proposed to rehabilitate damaged sewer mains in residentially developed urban neighborhoods throughout the District. Spot repairs are all within the public right of way, with sewer mains located in private backyards and staging areas located along public roadways. As part of the application for a State Revolving Loan to cover the District's 10-year capital improvement program, Sequoia performed a desktop review and site analysis of the project areas, identifying species and habitats with the potential to occur. We applied the results of this analysis to focus our on-site reconnaissance survey and habitat assessment. Based on the results of these analyses, Sequoia prepared a Biological Resources Report and developed mitigation measures in accordance with the CEQA checklist. We also prepared a detailed set of maps representing habitat types as well as observed and historic locations of special-status species on the project sites.



Community Pipeline Safety Initiative (CPSI)

- VARIOUS LOCATIONS

PG&E set out to survey all areas above and around their natural gas transmission pipelines to help ensure immediate access for emergency response crews and prevent damage to the pipeline. This involved removal and replacement of foliage and structures that may obstruct access to gas pipelines. As a subconsultant, Sequoia is providing biological support for project implementation including pre-construction surveys and habitat assessment for California red-legged frog, California tiger salamander, nesting birds, and a multitude of other species across California. We also provide biological monitoring of tree and structure removal activities in environmentally sensitive areas.

Sequoia routinely provides environmental training to crew members; conducts special-status species and nesting bird surveys, and works with crews to keep the projects compliant and running smoothly.



Pittsburg-Tesla 230-kV Reconductoring & NERC Alert Transmission Upgrades • ALAMEDA & CONTRA COSTA COUNTIES

Sequoia's team of biologists, planners, and project managers supported this 36-mile transmission reconductoring project and PG&E's service-wide safety upgrades to electric transmission lines, providing pre-construction surveys and planning, project management, and biological monitoring that included helicopter and crane work. Because of the project's wide geographical range, Sequoia assisted PG&E with site assessment and mitigation and monitoring to comply with ten different environmental permits including East Contra Costa County's (ECCC's) Habitat Conservation Plan (HCP). We also performed pre-activity surveys for listed species, pre-construction nesting bird surveys, and full-time biological monitoring of golden eagle, bald eagle and other avian species during helicopter work. As a result of Sequoia's effective project management and rigorous QA/QC, all 12 of the site inspections performed by 6 regulatory agencies over the course of the 8-month program resulted in a finding of compliance.



Pipeline Replacement R-349 at San Francisquito Creek • SANTA CLARA COUNTY

Sequoia served as the CDFW-approved biological monitor for salt marsh harvest mouse and California Ridgway's rail on this pipeline replacement project near Palo Alto. Our biologists performed pre-construction surveys for potential sensitive species including California Ridgway's rail, salt marsh harvest mouse, San Francisco garter snake, and western pond turtle. We monitored all pipeline replacement activities, conducted environmental training for crew members about nearby sensitive species and habitats, performed daily site walks and inspected wildlife exclusion fencing, maintained detailed notes of maintenance issues and fencing deficiencies, and coordinated work activities with multiple agencies including PG&E, San Francisquito Creek Joint Powers Authority, CDFW, and USFWS.



MITIGATION PLANNING & BANKING PROJECTS



Private Ranch Long-term Mgmt Plan & Conservation Easement • SANTA CLARA, SAN BENITO, & MERCED COUNTIES

Sequoia is working with the landowner, land trusts, and permittees to establish and manage conservation easements on private land near Gilroy and Hollister as compensatory mitigation for impacts to California tiger salamander, California red-legged frog, and San Joaquin kit fox. Sequoia is conducting aquatic sampling for California tiger salamander and California red-legged frog; coordinating with clients, stakeholders, and resource agencies; performing photodocumentation; monitoring residual dry matter; and preparing annual reports to ensure that conservation goals are met. We have prepared several long-term management plans for easements on the property and developed a draft prospectus to explore the possibility of establishing a conservation bank on the lands. Sequoia is also performing research on California tiger salamander present on the ranch in coordination with academic researchers and wildlife agencies.



Private Ranch Conservation Bank Establishment

• SANTA CLARA COUNTY

Sequoia assisted the property owner in establishing a conservation bank on their 3,354-acre property in Santa Clara County. Sequoia is tasked with all necessary biological surveys to determine absence/presence of listed species within the property. We have developed a phased study plan that is sensitive to the clients' budget and the stage in bank development to ensure that resources are expended at the proper time. Sequoia is also leveraging new technologies such as drone/unmanned aerial vehicle (UAV) imagery, camera trapping, and mapping and environmental DNA sampling (eDNA) for cryptic species to generate baseline information for subsequent analyses.

Sequoia coordinates with the agencies on behalf of the family and drafts all required documents for establishing a conservation bank including a prospectus and bank enabling instrument. Sequoia also prepared a feasibility study to explore market valuation and bank crediting strategies and habitat creation, enhancement, and restoration opportunities.



Fairview Corners Conservation Easement and Long-term Management Plan • SAN BENITO COUNTY

Sequoia is providing biological services related to establishing a conservation easement over California tiger salamander and California red-legged frog upland habitat in Santa Clara and Merced counties as compensatory mitigation for the species. Sequoia has performed habitat suitability assessments, habitat mapping, and focused surveys for these threatened amphibians. Our team has also authored a long-term management plan and baseline conditions report. The project has involved coordination with clients, attorneys, landowners, researchers, and land managers to develop monitoring and mitigation strategies.



Catraio Ranch Long-term Management Plan Implementation • SOLANO COUNTY

The Catraio Ranch Mitigation Project establishes off-site mitigation for unavoidable impacts to California red-legged frog and callippe silverspot butterfly in Solano County. In support of this project, Sequoia designed a monitoring protocol for California red-legged frog, obtained USFWS approval for the protocol, and performed aquatic monitoring and upland habitat/grazing monitoring. We also developed the site-specific residual dry matter monitoring plan to inform grazing management on the active ranch and prepared grazing management prescriptions to improve habitat quality for the two focal species.

Sequoia is currently conducting monitoring surveys for California red-legged frog, managing floristic monitoring surveys for callippe silverspot butterfly, and preparing annual monitoring reports.





TESTIMONIALS

"Sequoia's project managers are sharp, communicative, and thorough. Their biologists are great with the crews, and largely due to their guidance we rarely see compliance issues. They are experts on the species we work with, and leverage their expertise to ensure the least possible risk to them. Any questions and issues that come up with project compliance are communicated promptly and resolved easily."

"One of the most impressive things about Sequoia is that the staff are not there merely to provide a service; staff actively engage in collaborative problem-solving with the client, which has saved my agency money and time. Their staff are highly qualified scientists, but the best kind of scientists – with a keen eye toward communication and customer service. I know that my project manager has my project's best interests at heart, and I trust her completely."

Kristen Van Dam, East Bay Regional Park District Resource Analyst/Ecologist

"Sequoia's biologists provided very helpful biological surveys and project monitoring on many PG&E gas and electric maintenance projects. I could always count on their careful attention to quality and cost while they performed this work in support of both the San Joaquin Valley and Bay Area Habitat Conservation Plans that covered 18 California counties. Sequoia's management and staff are awesome."

Mark Dedon, former PG&E Habitat Conservation Plan Administrator

"Sequoia staff were professional, friendly, and flexible, even while working in difficult post-wildfire environments with a variety of challenges. The assessments and survey methodologies paid exceptional attention to detail and the resulting deliverables were top notch."

California State Parks Natural Resource Program Environmental Scientist

"Sequoia has provided critical support in the planning and implementing vegetation and stream bank restoration projects associated with PG&E's Spring Gap Stanislaus Hydroelectric Project. They conducted pre-disturbance inventories, developed and implemented revegetation plans, and provided maintenance and monitoring after implementation was complete. Sequoia has been a major player on our team, always communicating in a timely fashion, especially when issues arise, and are always ready to go the extra mile."

Larry Wise, PG&E Senior Aquatic Biologist



SEQUOIA
Ecological Consulting, Inc.

DANVILLE

Debie Montana
925.855.5500

SACRAMENTO

Brett Hanshew
530.848.4925

SAN DIEGO

Tashi MacMillen
831.239.1645