

About Sequoia Ecological Consulting

Integrated biological, permitting, and project management services—from planning stages through mitigation monitoring.

Founded in 2011, Sequoia Ecological Consulting, Inc. (Sequoia) provides biological and ecological consulting services to public agencies, utilities and infrastructure developers, consultants, contractors, and private clients throughout California. From our offices in Contra Costa, San Diego, and Sacramento Counties, **Sequoia helps our clients minimize project impacts on biological resources, supporting them with analysis and planning, permitting strategy and applications, monitoring, and reporting to satisfy the requirements of varied complex permits.**

Sequoia's team includes **wildlife biologists, botanists, construction monitors, restoration specialists, herpetologists, storm water inspectors, permitting specialists, and aquatic biologists**—all of whom are experienced in the evaluation of biological resources at all levels.

SERVICES

- Environmental Compliance Monitoring, Permitting & Training
- Environmental Project Management
- CEQA/NEPA Process & Documentation
- Species Protocol Surveys & Constraints Analysis
- Habitat Assessments & Mapping
- Biological Assessments
- Restoration & Mitigation Plans/Monitoring
- Biological Mitigation Monitoring
- Rare Plant Surveys
- Nesting bird/raptor surveys; Avian Protection & Exclusion Plans
- Fisheries Surveys & Habitat Assessments; Electrofishing
- 10(a)1(A) Services and CDFW MOU for California Red-legged Frog, CA Tiger Salamander, San Francisco Garter Snake, and Vernal Pool Brachiopods, Sierra Nevada Yellow-legged Frog, Foothill Yellow-legged Frog
- Mitigation Banking & Monitoring
- Wetland Delineations
- Storm Water QSP & Inspections

CERTIFICATIONS

SBE (Micro)	CA DGS # 1790596
DBE	CUCP/Caltrans # 40492
WBE	CPUC # 11110228 WBENC # 2005127466 Federal WOSB and EDWOSB # W010182

COMMODITY CODES

NAICS

541620	Environmental Consulting
541690	Other Scientific and Technical Consulting

UNSPSC

77000000	Environmental Services
77101505	Environmental Monitoring
77101707	Ecology Advisory Services
77101604	Natural Resources Management or Conservation Strategy Planning

PSC

B516	Fisheries and Animal Studies
B510	Environmental Assessments
B525	Natural Resource Studies
B534	Wildlife Studies
B509	Endangered Species Studies (Plant/Animal)
B520	Grazing/Range Use Studies
B513	Feasibility Studies (Non-Construction)

SAFETY CERTIFICATIONS

PG&E	Gold Shovel Standard
ISNetworld	Approved

GSA CONTRACT

Contract No.	47QRAA18D0024
Schedule	00CORP
SIN No.	899 1
NAICS	541620, Environmental Consulting

Contact us at gsa@sequoiaeco.com to request a quote.

Representative Sequoia Projects

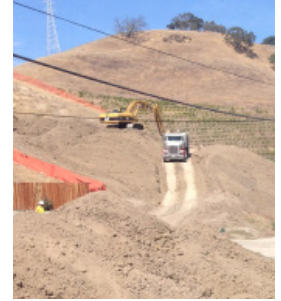
CONSTRUCTION

- **Webcor UC Merced 2020 Expansion** | Merced County
- **Contra Costa Water District Canal Replacement** | Contra Costa County
- **El Charro Specific Plan Biological Support for Various Construction Projects** | Alameda County



TRANSPORTATION AND INFRASTRUCTURE

- **Solano County Roadway Improvement Projects** | Solano County
- **Orwood Road Bridge Replacement** | Contra Costa County
- **Alhambra Valley Road Safety Improvement Project** | Contra Costa County



CONSERVATION, PARKS, AND OPEN SPACE

- **EBRPD Fuels Management Support** | Alameda and Contra Costa Counties
- **Old Haul Road Plant Survey** | San Mateo County
- **Mt. Diablo State Park, Juniper Trail Rare Plant Surveys** | Contra Costa County



MINING/RECLAMATION AND NATURAL RESOURCES

- **Russian River Alexander Valley Instream Mining & Salmonid Habitat Improvements** | Sonoma County
- **Graniterock Sand Plant Revegetation Monitoring** | Santa Cruz County
- **Mission Valley Rock Quarry Compliance Support** | Alameda County



UTILITIES

- **Pittsburg-Tesla 230-kV Reconductoring & NERC Alert Transmission Upgrades** | Alameda & Contra Costa Counties
- **PG&E Community Pipeline Safety Initiative (CPSI)** | Various Locations Statewide
- **Pipeline Replacement R-349 at San Francisquito Creek** | Santa Clara County



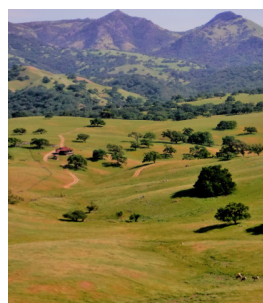
WATER/HYDROELECTRIC

- **Kennedy Meadows Bank Stabilization & Restoration** | Tuolumne County
- **Kaiser Pond & Shinn Pond Fish Passage Retrofit** | Alameda County
- **Phoenix Project Flow Variance Monitoring & Relicensing Support** | Tuolumne County



MITIGATION PLANNING & CONSERVATION BANKING

- **Fairview Corners/Gavilan CCD and Caltrans Conservation Easements Long-term Mgm't Plan Development & Implementation** | Santa Clara County
- **Catraio Ranch Long-term Management Plan Implementation** | Solano County
- **American Canyon Quarry Conservation Valuation Biological Studies** | Napa County



SEQUOIA
Ecological Consulting, Inc

Debie Montana, President
156 Diablo Road, Suite 320
Danville, CA 94526
925.855.5500
dmontana@sequoiaeco.com
www.sequoiaeco.com
DIR # 1000022497

